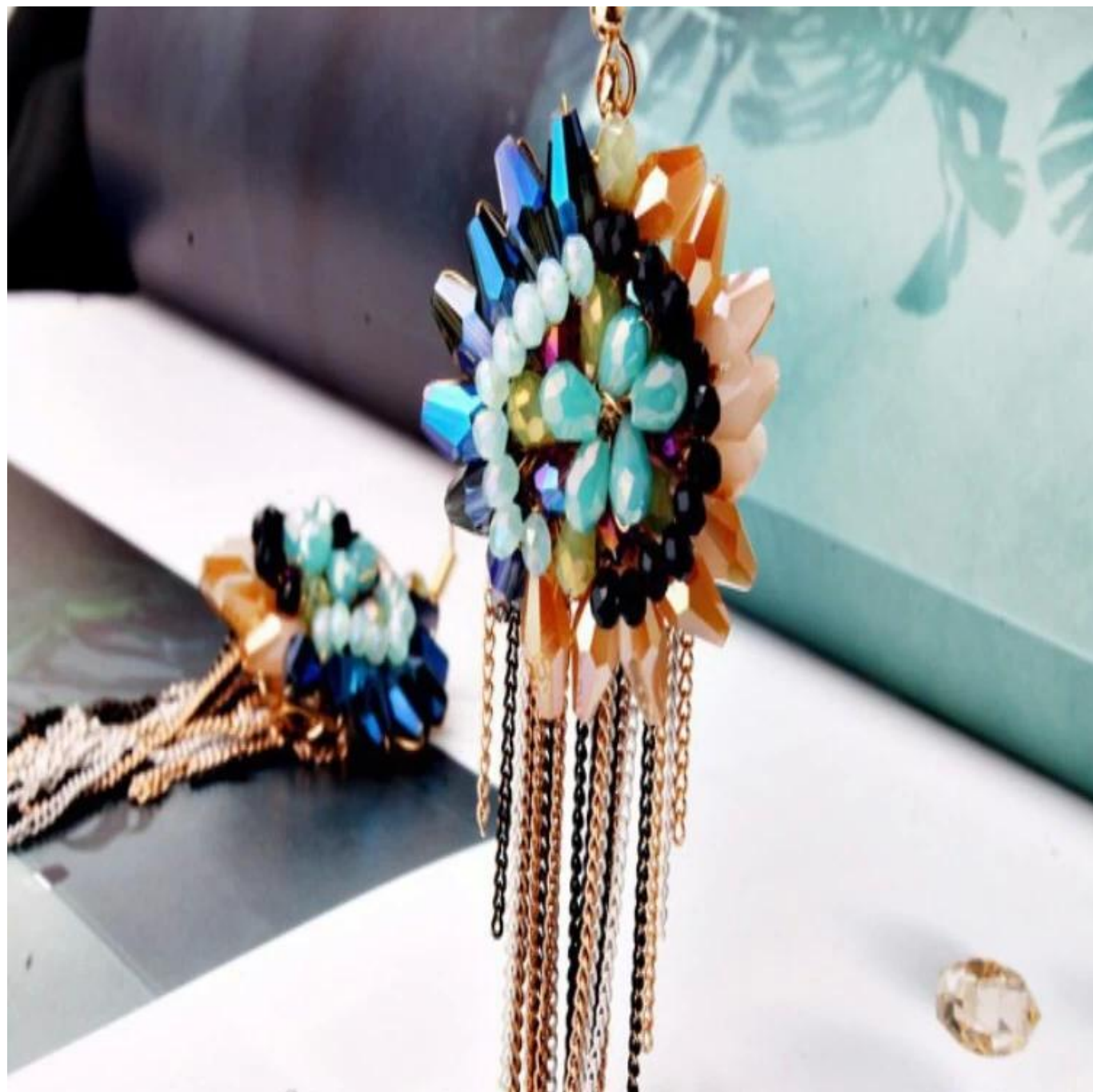


[wholesale fashion jewelry](#) tassel drop silk thread earring, earring factory china, latest model fashion colorful tassel earrings

Product show:























SWAROVSKI ELEMENTS

颜色 ROUND STONES, SEW-ON STONES, FANCY STONES, BUTTONS 效果

| | | | | | | | |
|---|-----------------------------|---|-----------------------------------|---|----------------------------------|---|--|
|  | 白色 001 Crystal |  | 薰衣草紫 283 Provence Lavender |  | 青绿色 291 Fern Green |  | 彩白 001 AB Crystal Aurore Boreale |
|  | 雪面白 234 White Opal |  | 藏荷紫 539 Tanzanite |  | 翠绿 360 Erinite |  | 银彩 001 SAT Crystal Satin* |
|  | 瓷白 281 White Alabaster |  | 仙客来红紫面白 398 Cyclamen Opal |  | 绿色 205 Emerald |  | 哑面加工 001 MAT Crystal Matt Finish*** |
|  | 玫瑰面白 395 Rose Water Opal |  | 紫色 204 Amethyst |  | 宫廷绿面白 393 Palace Green Opal |  | 水晶月光 001 MOL Crystal Moonlight |
|  | 古典玫瑰 319 Vintage Rose |  | 紫丝绒 277 Purple Velvet |  | 深橄榄 228 Olivine |  | 银色魅影 001 SSHA Crystal Silver Shade |
|  | 浅玫瑰 223 Light Rose |  | 深靛蓝 288 Dark Indigo |  | 卡其 550 Khaki |  | 金色魅影 001 GSHA Crystal Golden Shadow |
|  | 玫瑰 209 Rose |  | 墨蓝 207 Montana |  | 金黄水晶 226 Light Topaz |  | 水晶铜 001 COP Crystal Copper* |
|  | 印第安粉 289 Indian Pink |  | 深蓝 243 Capri Blue |  | 向日葵 292 Sunflower |  | 水晶红岩 001 REDM Crystal Red Magma* |
|  | 紫红 502 Fuchsia |  | 蓝色 206 Sapphire |  | 淡黄 213 Jonquil |  | 银光 001 CAL Crystal Comet Argent Light* |
|  | 红宝石 501 Ruby |  | 浅蓝 211 Light Sapphire |  | 丝绸色 391 Silk |  | 雪面白天蓝 234 SBL White Opal Sky Blue**/* |
|  | 水莲花 542 Padparadscha |  | 幻空蓝面白 285 Air Blue Opal |  | 浅蜜桃 362 Light Peach |  | 雪面白夜星光 234 STS White Opal Star Shine**/* |
|  | 红铃石 236 Hyacinth |  | 海蓝 202 Aquamarine |  | 淡黄水晶 246 Light Colorado Topaz |  | 蓝光 001 BBL Crystal Bermuda Blue** |
|  | 浅红 227 Light Siam |  | 浅粉蓝 361 Light Azure |  | 黄水晶 203 Topaz |  | 紫红光 001 HEL Crystal Heliotrope** |
|  | 印第安红 327 Indian Siam*** |  | 印第安蓝 217 Indian Sapphire |  | 浅烟黄水晶 221 Light Smoked Topaz |  | 水晶金属蓝 001 METBL Crystal Metallic Blue* |
|  | 深红珊瑚 396 Dark Red Coral |  | 绿面白 390 Pacific Opal |  | 烟黄水晶 220 Smoked Topaz |  | 紫光 001 VL Crystal Vitrail Light** |
|  | 红色 208 Siam |  | 翠蓝 267 Turquoise |  | 莫卡理 286 Mocca |  | 七彩 001 VM Crystal Vitrail Medium** |
|  | 深红 308 Dark Siam**** |  | 彩蓝 379 Indicolite |  | 烟石英 225 Smoky Quartz |  | 黄光 001 SAH Crystal Sahara** |
|  | 石榴红 241 Garnet |  | 加勒比蓝面白 394 Caribbean Blue Opal |  | 沙面白 287 Sand Opal |  | 烟色光 001 TAB Crystal Tabac** |
|  | 酒红 515 Burgundy |  | 蓝锆石 229 Blue Zircon |  | 浅灰面白 383 Light Grey Opal |  | 火山色 001 VOL Crystal Volcano** |
|  | 淡紫 212 Light Amethyst |  | 贵橄榄 238 Chrysolite |  | 灰褐色 284 Greige |  | 水晶金属浅金 001 MLGLD Crystal Metallic Light Gold* |
|  | 紫罗兰 371 Violet |  | 橄榄 214 Peridot |  | 黑钻石 215 Black Diamond |  | 高丽金 001 DOR Crystal Dorado* |
| | | | |  | 黑色 280 Jet |  | 古铜黑 280 NUT Jet Nut* |
| | | | | | |  | 黑矿 280 HEM Jet Hematite* |
| | | | | | |  | 银色夜影 001 SINI Crystal Silver Night* |
| | | | | | |  | 金属银黑 280 METSI Jet Metallic Silver* |



 施华™ (XILION) 圆形水钻
 型号 1028 SS 29
 印第安红及深地红为 PP 14
 经典颜色
 独有颜色

WWW.SWAROVSKI-ELEMENTS.COM/BUSINESS







Development and design:

Everyone knows that design is the soul of jewelry. In order to conform to the world of jewelry fashion.

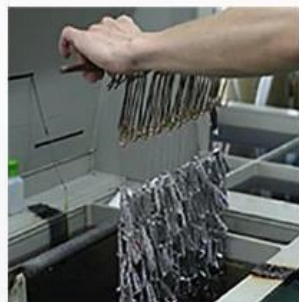
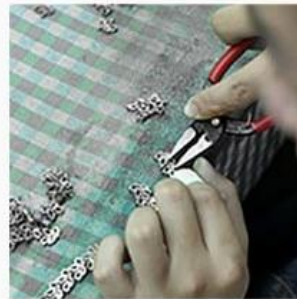
We set up our own professional design and development team. They are good at designing and making molds.

So that we can continue to update the product, 500-100 models per month design.

We also welcome customers' orders, Just tell us your design picture or idea, We will proof production for you.



Production display :



Environmental plating

Lead - free nickel - free chromium - free environmental gold plating
So that jewelry is more glossy more wear-resistant, anti-allergic, color retention more durable



- 1: the role of thick silver plating: Increase the whiteness and smoothness**
- 2: the role of palladium plating: Increase the hardness and wear resistance, color effect**
- 3: the role of rhodium plating: Increase the brightness, wear resistance, Improve color retention time**

Factory external environment:



Factory staff □



Factory workers military exercises and entertainment □



Happy travel☑



FAQS:

Q: Are you a manufacturer?

A: Yes, we are an experienced manufacturer with our own molds and production lines.

Q: How to place an order?

A: You can choose some items you like online, or you can write down the item/code number, with quantities you want, contact our customer service to make order.

Q: How long to prepare an order?

A: We have a lot of products on sale, if your order are all in stock, then can prepare within 1 day. if no stock, and you want, please contact our customer service to further discuss.

Q: How long would I get the goods?

A: Usually we ship by DHL/UPS/TNT/EMS, you can get the goods within 3-5days. If you choose other shipping method, please contact our customer service.

Q: How to pay?

A: You can pay by T/T, Western Union and Paypal .

Q: Can I have our own design?

A: Sure you can, our designer will according to your picture or ideas to draw/design picture. The product will arrange production when you confirm.

Q: What should I do if the goods arrive damaged?

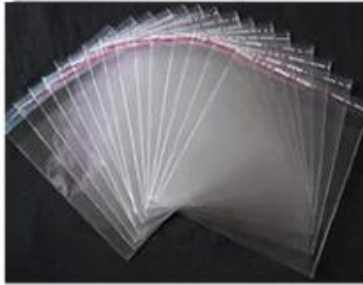
A: Please for sure, Our QC will check all good when they ship. Please take photo to us for confirm if products are destroyed by ship And new one will be sent to you in your new order.

Q:The item I received is broken ,what should i do?

A:Every piece of jewelry is theory roundly inspected before being packed and is carefully packed before we ship it. Please know that once it leaves our factory. We are not in charge of the handing through the shipping service and they may handle the package roughly. We will do our best to label the package appropriately to avoid any damage. Please contact us with picture of the damages and we will help you to resolve this issue.

PACKAGE

- 1.OPP bag for each piece
- 2.Final packing with steel box or hard carton
- 3.Other package requested is available



opp bags



Bubble bag



carton box

SHIPMENT

1. Delivery date depends on the quantity of order, as usual, 20 days after deposit.
- 2.Transportation: by express, UPS/DHL/Fedex/EMS/, or you can have your own forwarder.
- 3.Shipment cost is according to the destination,way and total weight of merchandise.



Shenzhen MeiLanXuan Costume Jewelry Co., Ltd. are professional manufacturer and supplier of fashion jewelry made of 925 Silver, Stainless steel, Brass, Alloy, Zircon, Crystal, Agate, Glass, Bead, and other materials. Since now we have 13 years experience about jewelry making . Our production follows highest standard

We supply more than 20,000 high-quality products at a competitive price, which sells well in the American land , Europe, middle east, South Africa and South Asia etc with more than 20 countries in total.

We can produce customer's own designs. Our factory is located in Dong guan City, Guangdong Province, which has an area of more than 1000 square meters. we have more than 100 specialized workers and engage in jewelry business. Usually we have very low minimum quantity limit, competitive price and fast delivery. environmental real gold plating and the color retention can last for a long time , carefully quality checking before packing to insure every piece is perfect .

MeiLanXuan will be your reliable [jewelry supplier in China.](#)

Dear Customers,

What are you waiting for?

Our company is a professional manufacturer for the most fashionable jewelries. We sincerely treat every customer and we believe our delicate and high quality jewelry products will help your business go up faster and faster, better and better. Just contact us for more information by e-mail or phone.

Looking forward to cooperating with you!

Thank you !