

Custom design high quality die copper gold rhodium [plated bangle womens bracelets](#)

Products photos show:





B10019



**B10019**

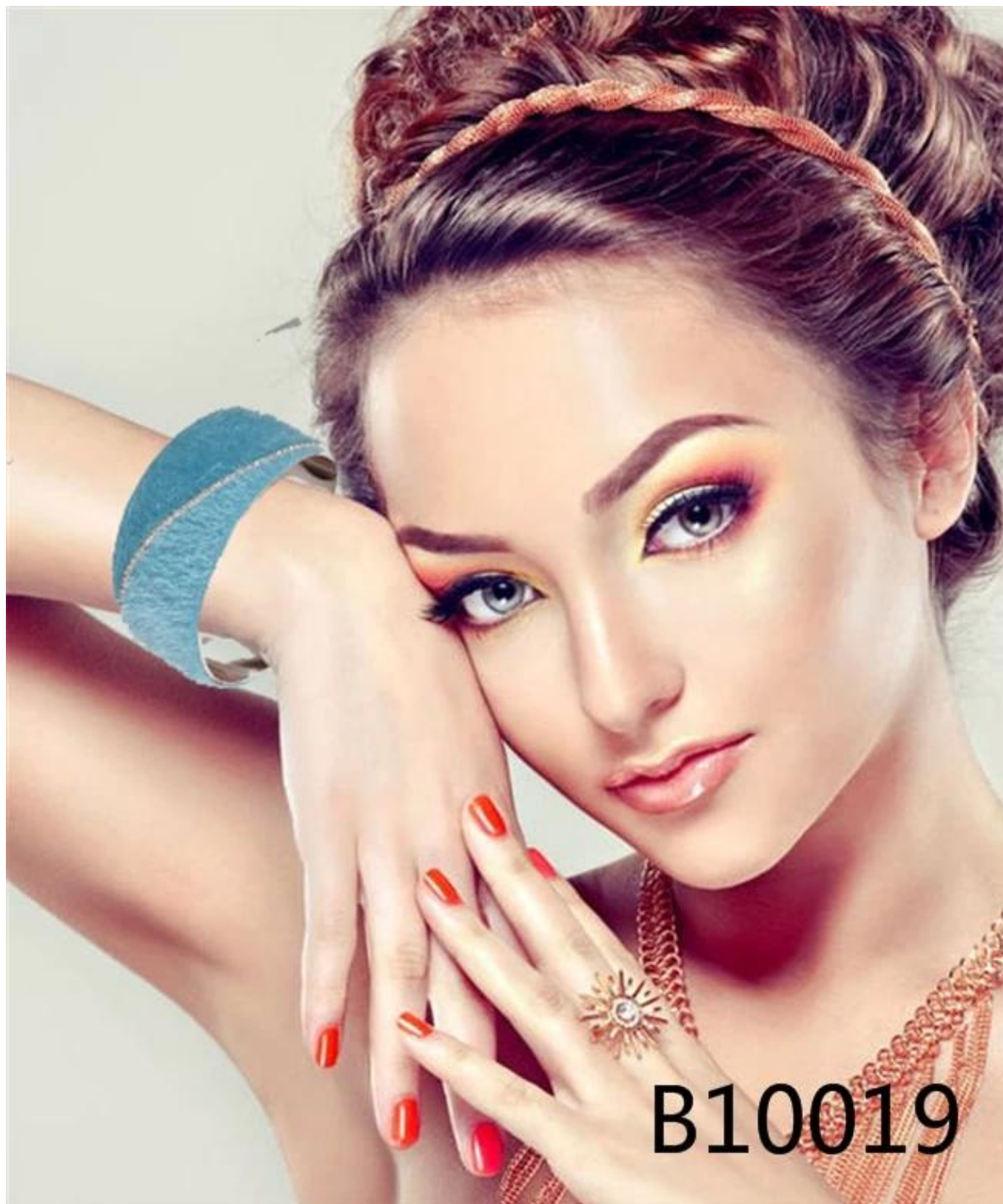


B10019



B10019









weight:42.4g

**Our factory show:**

**Factory external environment** 





**Factory produced:**



**Production knowledge training**



**Office clerk temperament training**



**Amazon elite training**





Excellent staff photo👍





## Happy travel:



## Factory workers military exercises and entertainment:



## FAQS:

**Q: Are you a manufacturer?**

**A: Yes, we are an experienced manufacturer with our own molds and production lines.**

**Q: How to place an order?**

**A: You can choose some items you like online, or you can write down the item/code number, with quantities you want, contact our customer service to make order.**

**Q: How long to prepare an order?**

**A: We have a lot of products on sale, if your order are all in stock, then can prepare within 1 day. if no stock, and you want, please contact our customer service to further discuss.**

**Q: How long would I get the goods?**

**A: Usually we ship by DHL/UPS/TNT/EMS, you can get the goods within 3-5days. If**



**you choose other shipping method, please contact our customer service.**

**Q: How to pay?**

**A: You can pay by T/T, Western Union and Paypal .**

**Q: Can I have our own design?**

**A: Sure you can, our designer will according to your picture or ideas to draw/design picture. The product will arrange production when you confirm.**

**Q: What should I do if the goods arrive damaged?**

**A: Please for sure, Our QC will check all good when they ship. Please take photo to us for confirm if products are destroyed by ship And new one will be sent to you in your new order.**

**Q:The item I received is broken ,what should i do?**

**A:Every piece of jewelry is theory roundly inspected before being packed and is carefully packed before we ship it. Please know that once it leaves our factory. We are not in charge of the handing through the shipping service and they may handle the package roughly. We will do our best to label the package appropriately to avoid any damage. Please contact us with picture of the damages and we will help you to resolve this issue.**

**packing & shipment**

## PACKAGE

1. OPP bag for each piece
2. Final packing with steel box or hard carton
3. Other package requested is available



opp bags



Bubble bag



carton box

## SHIPMENT

1. Delivery date depends on the quantity of order, as usual, 20 days after deposit.
2. Transportation: by express, UPS/DHL/Fedex/EMS/, or you can have your own forwarder.
3. Shipment cost is according to the destination, way and total weight of merchandise.

